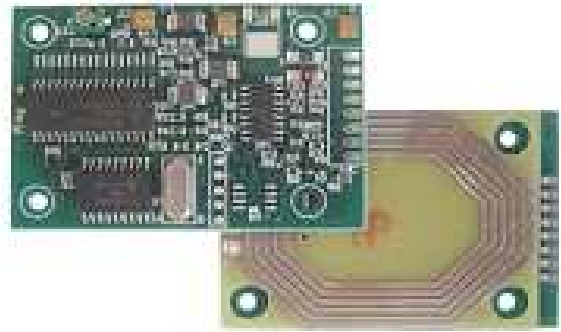


Feature Overview

- The FRW is a Front Side Serial Tag Reader/Writer
- Standard ISO15693,ICODE SLI-SL2
- Built-in antenna
- Available with different interfaces
- Anti-collision algorithm
- Automatic detection tag
- Product certified



Applications

- Data collection
- Systems of payment
- Vending
- Access control

Specifications

Transponders supported	ISO15693,ICODE SLI-SL2,MIFARE,ISO15693,ISO14443A,ISO14443B
Frequency	13,56MHz
Antenna	Internal
Reading distance	≤ 80 mm typ.
Writing distance	≤ 80 mm typ.
Serial interface	TTL-RS232-RS485-USB
Broadcast	9600 bits/s typ.
Visual output	LED ready
Size	58 x 40 x 10 mm
Power supply	5 VDC ± 5% (max 90mA typ.) o 12V
Operating temperature	-10°C ÷ 60°C
Storage temperature	-30°C ÷ 70°C
Weight	60 gr max
Operating humidity	10% ÷ 90% non condensing
Storage humidity	0% ÷ 95% non condensing


Notes:

Custom adjustment or firmware personalization available on every model.


Specifications are subject to change without prior notice.

V1


FRW oem models

P. Number	Interface	Mode	Power Supply	Picture
FRW-TTL-IS-5	TTL	Polling	5 Volt	
FRW-TTL-IH-5	TTL	Spontaneous	5 Volt	
FRW-232-IS-5	RS232	Polling	5 Volt	
FRW-232-IH-5	RS232	Spontaneous	5 Volt	
FRW-485-IS-12	RS485	Polling	12 Volt	

FRW-ONDA models

P. Number	Interface	Mode	Power Supply	Picture
FRW-TTL-IS-5-ONDA	TTL	Polling	5 Volt	
FRW-TTL-IH-5-ONDA	TTL	Spontaneous	5 Volt	
FRW-232-IS-5-ONDA	RS232	Polling	5 Volt	
FRW-232-IH-5-ONDA	RS232	Spontaneous	5 Volt	
FRW-485-IS-12-ONDA	RS485	Polling	12 Volt	

FRW-SHELL models

P. Number	Interface	Mode	Power Supply	Picture
FRW-TTL-IS-5-SHELL	TTL	Polling	5 Volt	
FRW-TTL-IH-5-SHELL	TTL	Spontaneous	5 Volt	
FRW-232-IS-5-SHELL	RS232	Polling	5 Volt	
FRW-232-IH-5-SHELL	RS232	Spontaneous	5 Volt	
FRW-485-IS-12-SHELL	RS485	Polling	12 Volt	

Notes:

Custom adjustment or firmware personalization available on every model.

Specifications are subject to change without prior notice.