

Road Stud Beacon  
Model: i11  
Datasheet V1.0

Part #	Description
i11-6001A	209070001, White color and Max. 50 meters range beacon with 1pc ER14505 battery pre-installed; Bluetooth® 5.0, pre-flashed MiniBeacon Plus software supports broadcasting iBeacon and Eddystone simultaneously.

The Road Stud Beacon i11 is a new generation beacon for tough industrial environments. It is featured with tough housing that against strong waterproof IP68 grade , dustproof, shockproof and explosion-proof. ER14505 battery with large battery capacity supports 3years lifetime usage. It can be fixed on the floor or objects by screws for locating and tracking. It is very easy to start the beacon by cutting the external wire and can be deployed in both Indoor and outdoor environments such as large supermarkets, factories, parking lots etc.

The i11 Road Stud Beacon is loaded with Bluetooth® 5.0 hardware platform and MiniBeacon Plus intelligence software that advertises standard iBeacon, Eddystone (UID, URL, TLM) simultaneously. It is able to configure the parameters via configuration app BeaconSET+ to specified parameters so that to meet various applications.

## FEATURE

- Advertise iBeacon & Eddystone simultaneously
- Bluetooth® 5.0 chipset nRF52 series
- 3 years battery lifetime with default settings
- IP68 waterproof, dustproof, shockproof and explosion-proof
- The max. 80 meters advertising distance



A4I11 Road Stud

## APPLICATION

Beacon

- Parking lots tracking
- Indoor and outdoor locating
- Asset tracking

## CONFIGURATION TOOL

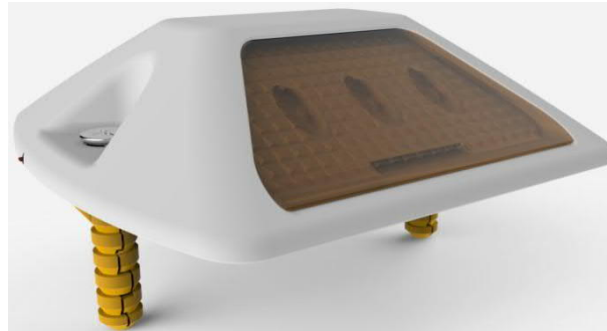
- BeaconSET+ (iOS & Android);

## CERTIFICATION

- iBeacon MFi License (IBC-14-00582)
- Bluetooth® EPL Certification
- FCC Regulation (FCC Part 15.)
- CE Regulation (Included EN300328/301489/60950/62479)

## MOUNTING METHOD

- Fix i11 beacon on the floor or the objects by screws mounting.



## ACTIVATE A4 I11

- Please DO NOT cut off the cable to start the device.



## BATTERY ASSEMBLY

- Pre-installed 1pc battery.
- Non-replaceable.

## ELECTRONIC PARAMETER

Item	Value	Remarks
Case Color	White	Other colors can be customized
Battery Model	2700mAh @ 3.6Volts	1pc ER14505 battery
Operation Voltage	1.8-3.9V	DC
Transmission Circuit	5.3mA (Max.)	Tested at 0dBm transmission power
Transmission Range	80 meters	Maximum @ open space
Transmission Power	-40dBm to +4dBm	Configurable
Broadcasting Interval	900ms	Default setting, configurable
Antenna	50ohm	On board / PCB Antenna
Accessory	Screws	2pcs screws and 2pcs plastic holders
Net Weight	140.0g	With battery
Size	100 x 100 x 25mm	Null

## PARAMETER SETTING

Each indoor beacon i11 has been pre-configured in the factory before the shipment. Here below is given the main parameters and default settings.

Type	Item	Default Settings
iBeacon	UUID (16 bytes)	E2C56DB5-DFFB-48D2-B060-D0F5A71096E0 (Proximity)
	Major (2 bytes)	0
	Minor (2 bytes)	0
Eddystone	Namespace ID @UID	random (10 bytes)
	Instance ID @UID	random (6 bytes)
	URL	https://www.asedis.it
Base Parameters	Measured Power	-59 (0xC5)
	Radio Tx power	6 (0dBm)
	Adv. Interval	9(900ms)
	Beacon ID	random, it is the MAC address of beacon.
	Beacon Name	i11
	Connectable	yes (it is configuration mode)
	Password	Ase12345 (8 characters only)
Extra Function	Reset factory	available
	Power off	available
	Modify password	available
	Remove password	available
	Update firmware	available

## PACKING INFORMATION



\*Standard package

Details	Min. Package	Carton
Quantity(i10)	6pcs /box	60pcs/carton
Net Weight	0.84kg/ box	8.4Kg/carton
Gross Weight	0.9kg/ box	9Kg/carton
Size	32 x 11 x 8 CM	32 x 23 x 40 CM

## TECHNICAL DOCUMENT

Item	Version	File Name	Date
Datasheet	V1.0	i11 Road Stud Beacon Datasheet	12 <sup>nd</sup> Jan, 2020
Instruction	V2.0	MiniBeacon Plus Configuration Instruction	5 <sup>th</sup> May, 2018
SDK	V2.0	Both iOS and Android	18 <sup>th</sup> May, 2018

## FIRMWARE FLASH

1. J-LINK Programmer Kit;
2. Programming ports definition;

<END>